

Mrs Campbell's Artwork of the Week -Wk2



Detail from the roof of **The Park Güell**
Designed by **Antoni Gaudi**
1906

Look out for....

The pieces of broken tiles making the **mosaic**, the sun made in **warm** colours and the background made in **cool** colours.

You can learn more about **warm** and **cool** colours by watching this

www.youtube.com/watch?v=N8yuyekP_So&vl=en

Try watching a **cartoon** which tells you more about Gaudi and the Park Güell (P1-4)

www.youtube.com/watch?v=C9u7nkjFOyM

or watching "A Stroll with Mr Gaudi" a **storybook** about him (P4-7)

www.youtube.com/watch?v=WlepwpQb8D0

You can **tour** the park by watching this video (P4-7)

www.youtube.com/watch?v=H8sofjHtEq8

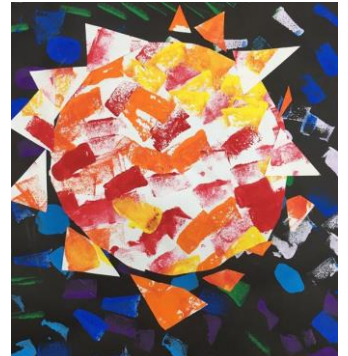
If you have a printer you can **download a puzzle**, **postcards** and **games** based on one of Gaudi's houses (P1-7)

www.casabatillo.es/en/news/games-crafts-download-gaudi/

Artwork Challenge

Why not try one of these

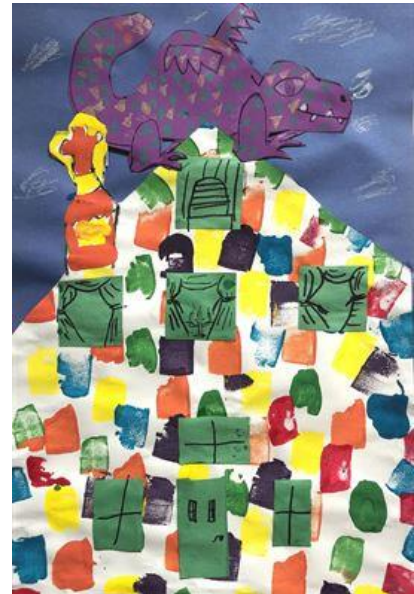
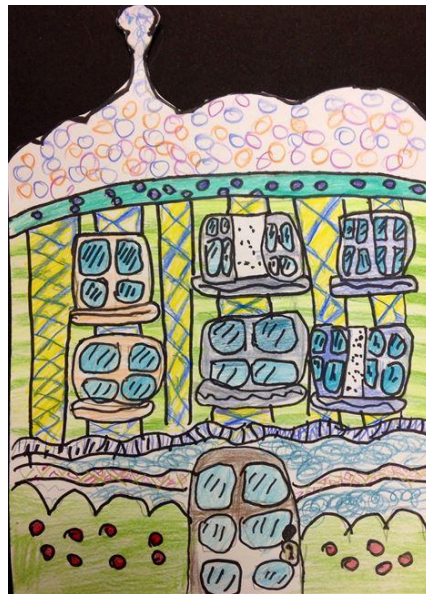
Try making your own mosaic by cutting up magazines or pieces of paper and gluing them to a paper plate. You could try some sponge painting, like the last example.



You could make a model of a lizard, like the one that guards the park, or draw one using felt pens.



Why not create your own fantasy house inspired by the ones Gaudi designed.



Here is a recipe for salt dough if you want to make a **model**.



Salt Dough

Playdough Recipe

You will need:

- 2 cups flour
- 1 cup salt
- 1 cup water
- Food colouring (optional)

Method

1. Mix together the flour and salt in a large mixing bowl.
2. If desired, add 5-10 drops of food colouring to 1 cup of water.
3. Stir the water into the flour and salt in the large bowl.
4. Roll out the dough on a flat surface and knead it together. It should be soft and pliable.
5. Make models and ornaments.
6. The dough can be left to air dry or dried in a low oven 120-150°C. The time the dough takes to dry will depend on the size and thickness of your creations.

